



16027 Hwy 64 East – Anamosa, Iowa 52205

Phone: 319-462-2344 or 888-962-2344

Email: [scaletec@scale-tec.com](mailto:scaletec@scale-tec.com)

# White-Ag Co 8816, 8824, 8500 Scale System

## Instruction Booklet

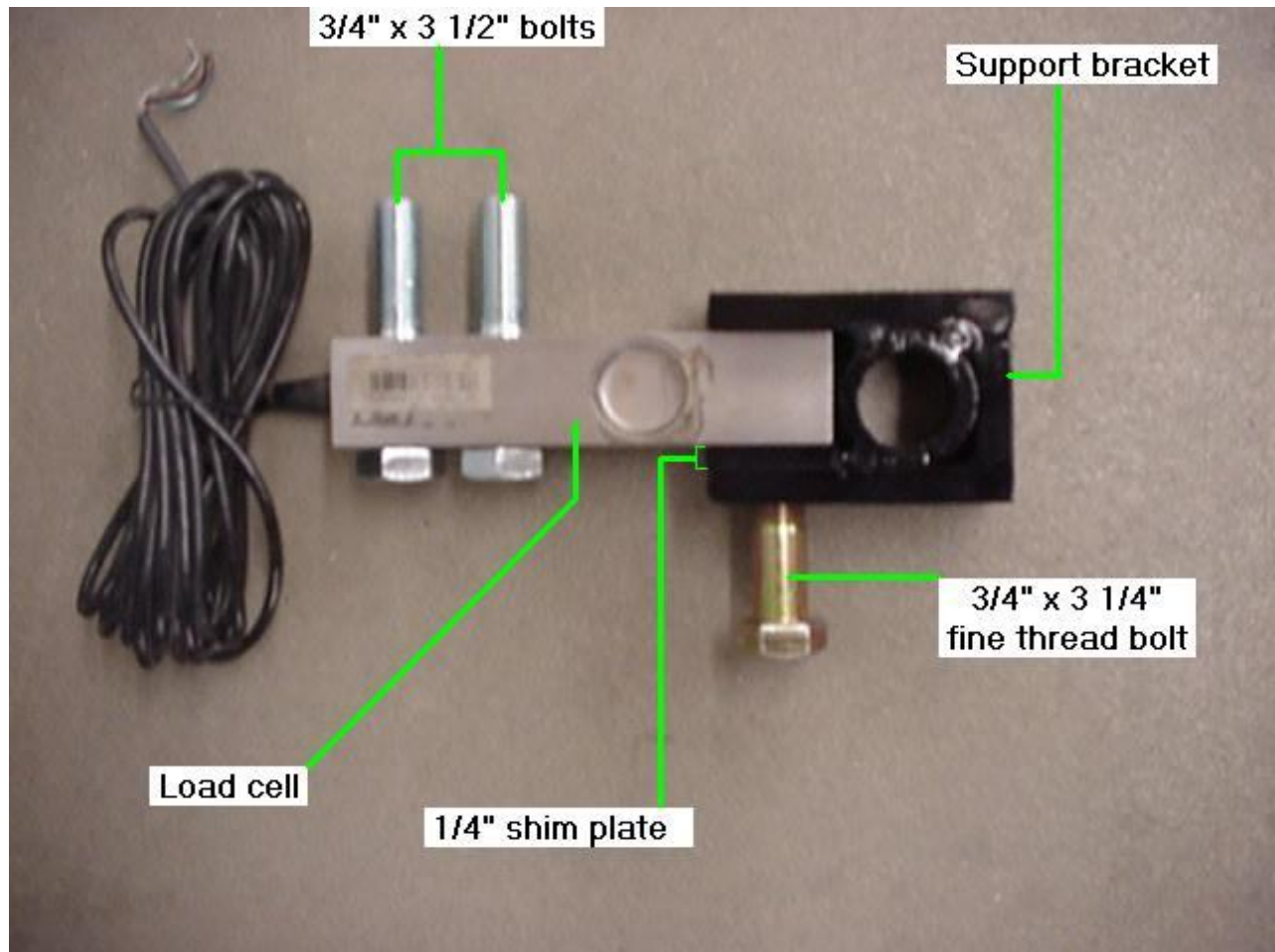
**This product application is covered by U.S. Patents;**

**PATENTS: 6,732,667—7,059,258—7,273,017—7,357,087—7,448,335—7,523,710 PATENT**

**PENDING: 12/427,915**

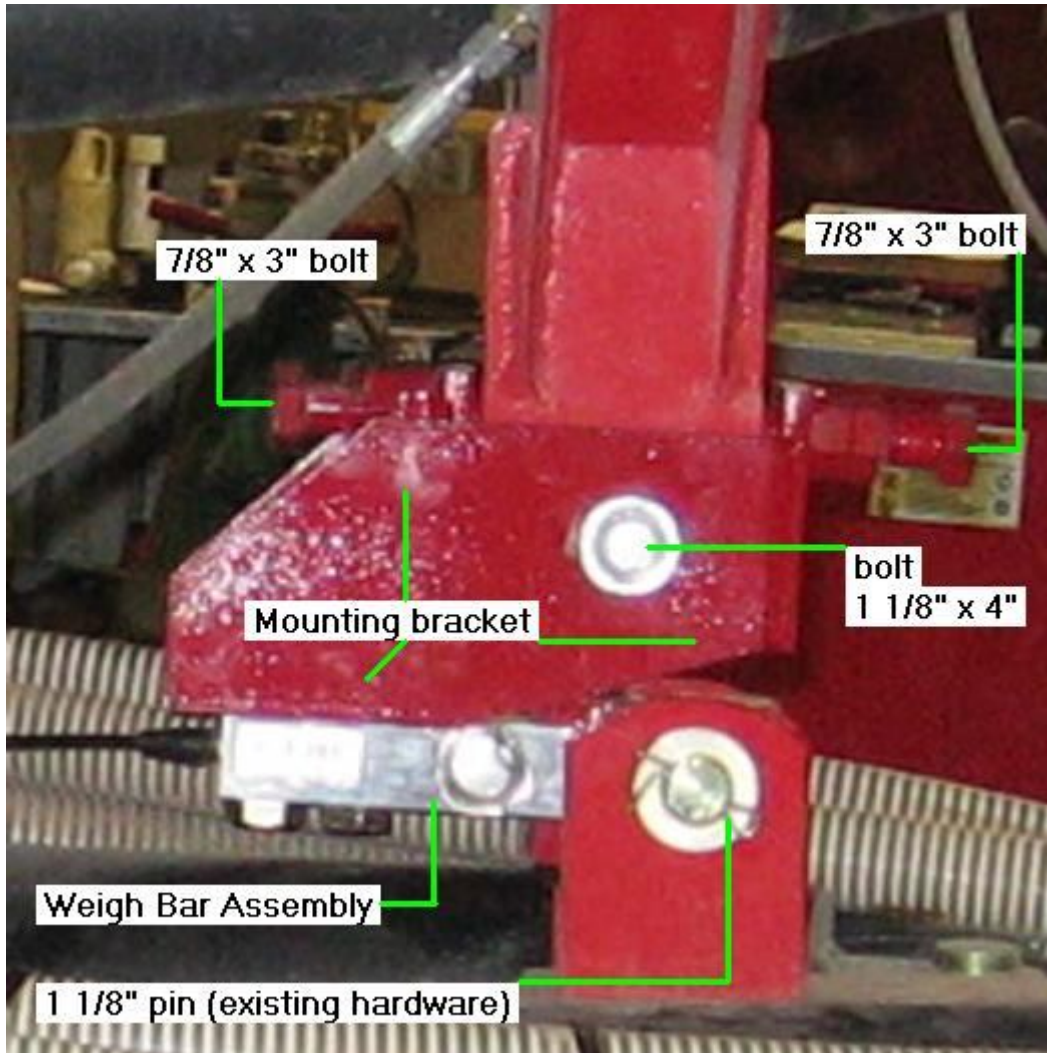
# White-Ag Co 8816, 8824, 8500

## Weigh Bar Assembly



The arrow on the end of the weigh bar is pointed UP. The shim plate on the support bracket needs to be on the bottom side of the weigh-bar. Bolt the support bracket to the weigh bar by using the  $\frac{3}{4}$ " x  $3\frac{1}{4}$ " fine thread bolt. This bolt will only fasten from the bottom side! Use  $\frac{3}{4}$ " jam nut on top to tighten the bolt. Use the two  $3\frac{1}{2}$ " x  $\frac{3}{4}$ " bolts to bolt the weigh bar assembly to the mounting bracket.

## Assembled Bar & Bracket Assemblies, Mounted View



Use the 1 1/8" x 4" bolt to fasten the weigh bar assembly to the leg of the planter. The weigh bar needs to be pointed toward the front of the planter. Level the mounting bracket by using the 7/8" x 3" bolts located on both sides of the mounting bracket. Use the existing 1 1/8" x 4" pin to mount the load cell to the base bracket on the planter.

# Assembled Bar & Bracket Assemblies, Wide View



# Indicator & Hopper



**Power Connection:**

The power cable should be connected directly to a vehicle battery or regulated power supply. The scale end of the power cable is attached to the J901 connector located on the bottom panel of the scale.

Connect the RED wire from the power cable to +12 VDC and the BLACK wire to GROUND. The indicator is fused internally at 4 amps.

Power Cable Connections:

<b>Wire color</b>	<b>Wire Function</b>
Red	<i>Battery (+12 VDC)</i>
Black	<i>GROUND</i>

**Load Cell Connection:**

The indicator is designed to operate with strain gage load cells. The indicator will normally be supplied with a “J-BOX” cable going between the scale and the load cell junction box.

Extension kits are available from your dealer in various lengths.

To connect the load cells, attach the junction box cable to the J902 or J903 connector on the bottom panel of the scale.

**How to use a scale on a Central Fill System**

\*\*\* The example we are using is 2000 lbs of seed evenly filled in both hoppers. There is 25 lbs of seed left from the last fill.

1. Push the ‘Start’ button. The screen will show zero, and the arrow is now pointing to ‘Net’ on the screen. This is a temporary zero point to start loading the planter with seed. You will now fill 1000 lbs of seed into the left hopper.
2. Push the 'Stop' button, the readout now reads 1025 lbs of seed inventory.
3. Push the ‘Start’ button again. The screen will say zero again. Load another 1000 lbs of seed into the right side.
4. Now push ‘Stop,’ and the screen will read 2025 lbs of seed. The numbers will work lower as the seed is planted.