



*"I need an easy way to save my data and get it into the computer for better record keeping"*

*"I'd like to eliminate the mistakes associated with manual data entry"*

*"I'm not sure about having a printer exposed to this environment"*

*"I need to keep better track of what my employees are doing"*

---

## Transfer Data System does the job

---

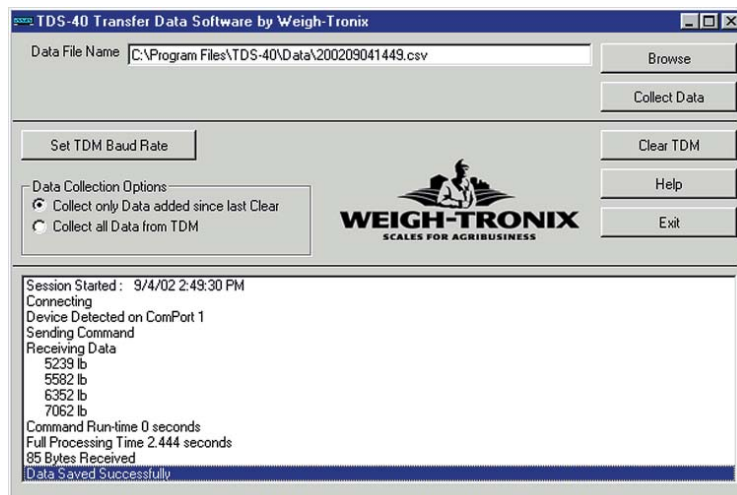
The Transfer Data Kit takes care of these customer concerns and more by providing a simple, reliable method of storing / transferring data from a scale to a computer. The system is compatible with any indicator equipped with an RS-232 serial port. No need to worry about having the right brand or style of computer (laptop or desktop) because it will interface to any computer with basic system requirements. The system is comprised of Transfer Data Software (TDS-40) and Transfer Data Module (TDM-40). It essentially serves as a "paperless printer".

The TDM-40 features 64KB of memory that will store 1,600 lines of information. Data is saved to the module each time the indicator would normally print. It is completely sealed against the environment in a durable, water-proof housing and virtually maintenance-free since no batteries are required. The internal power source recharges whenever the module is connected to the scale.

---

## Transfer Data Software Retrieves and Saves Data

---



The TDS-40 computer program quickly retrieves data from the module and saves it for easy export to most spreadsheets and databases. Simply connect the module to a ComPort on the PC, start the program, and click on *Collect Data*. The scale information is saved to a user-designated folder and downloaded files are conveniently named with an automatic date stamp. Use the system to easily track monthly feed usage, feeding efficiency, animal weightings, truck weightings, grain cart loads, and many many more applications.

# Transfer Data System-40

## Specifications

**PC Operating System:** Windows® 95/98/2000/NT/XP

**File Formats:** .csv, .doc, or .txt

**Computer Port:** RS-232 serial

**Memory Capacity:** 1600 lines (64K Bytes)

**TDM Enclosure:** Impact, dust, and water resistant -  
1.25" dia. x 3.7" Long

**Power:** Supplied by indicator or internal  
Self -charging (NO BATTERIES).  
No serviceable parts.

**Environment:** -20° F to 140° F (-29° C to 60° C)

**Agency Approvals:** FCC Class A  
CE (European Approval)

**Warranty:** Three years

## TDS-40 (Transfer Data System) Components

- RS-232 Serial Computer Cable
- Transfer Data Module (TDM-40)
- Transfer Data Software (TDS-40)
- Indicator Interface Cable (not needed for M1040)



**Avery Weigh-Tronix**  
1000 Armstrong Dr.  
Fairmont, MN 56031 USA  
Telephone: 507-238-4461  
Facsimile: 507-238-8283  
e-mail: [ag@weigh-tronix.com](mailto:ag@weigh-tronix.com)  
[www.agcales.com](http://www.agcales.com)

  
**Avery Weigh-Tronix**  
SCALES FOR AGRIBUSINESS